

Pickleball Project

Development Adjustments Commission
Meeting

May 17, 2023



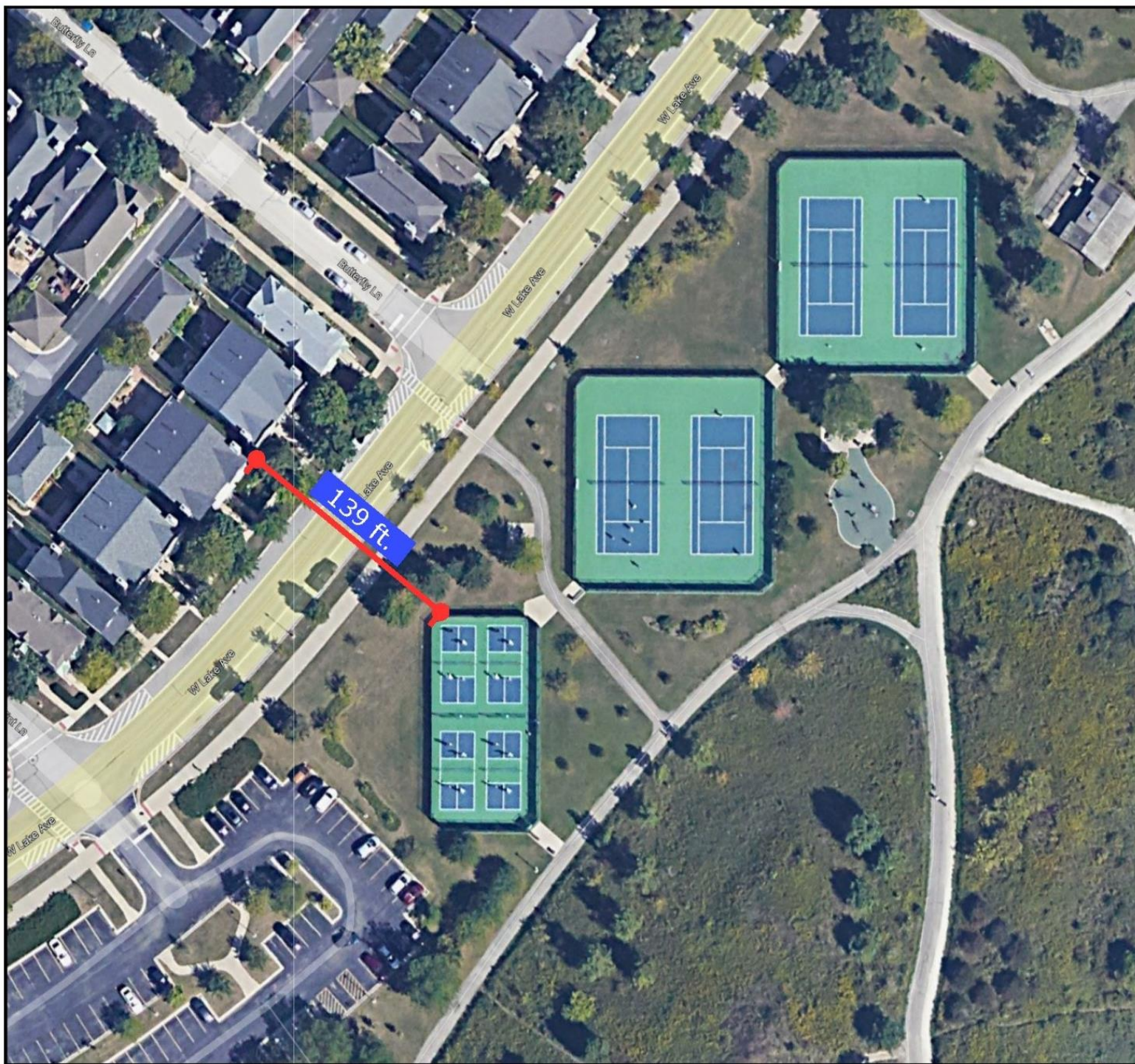
Valley Lo Club has agreed

- Sound reduction through Acoustifence – east side of courts 3 & 5
- “Slow roll out” – weekdays and weekends until 9 p.m., and weekend start time at 9 a.m.
 - Arbitrator to decide additional hours upon sound study
- Court lights – three sides shielded, no 10% tilt, on during play only, auto shut-down
- Parking lights – three sides shielded, no tilt, auto shut-down, off when closed, 4000K
- Parking lot fence – 6 feet tall with 90% privacy slats



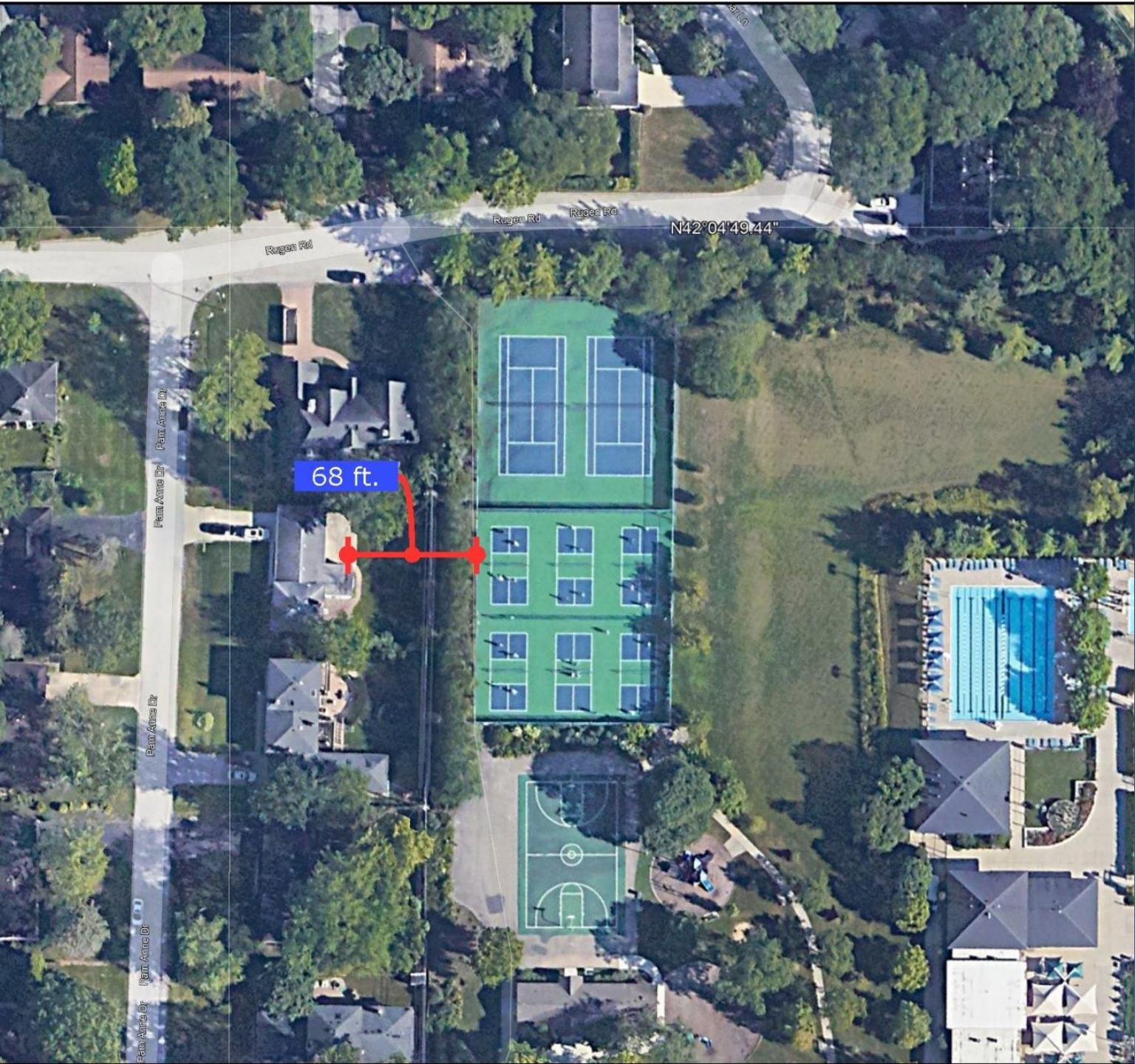
Valley Lo does not agree

- Start time – weekdays at 7 AM versus 8 AM
- Latest stop time after sound study
- Court lights – front shields, Kelvin rating, and motion sensors
- Parking lights – front shields and 3,000K
- Fence extension – remove 3 mature trees



Gallery Park

- 139 feet from homes

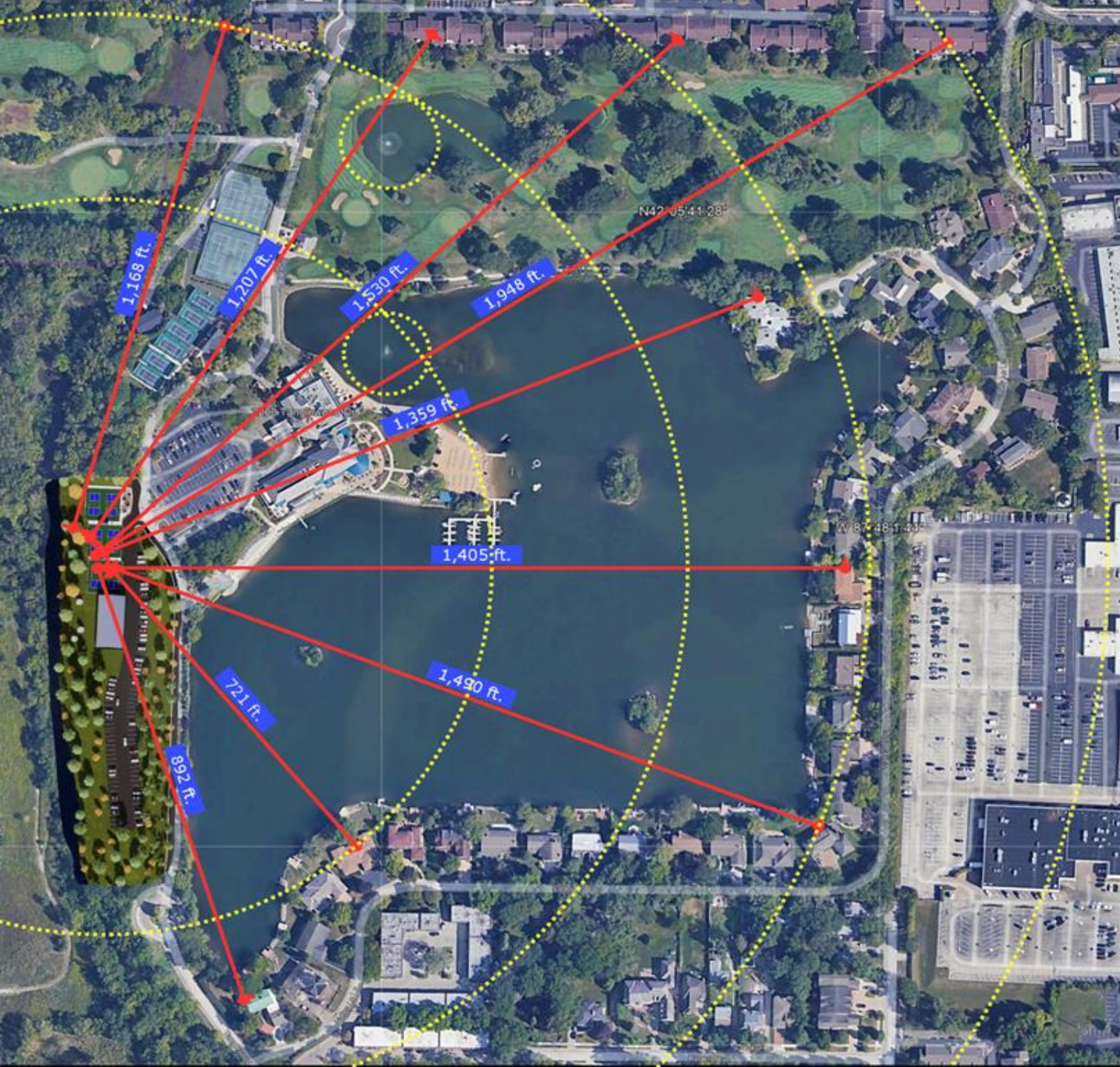


Flick Park

- 68 feet from homes

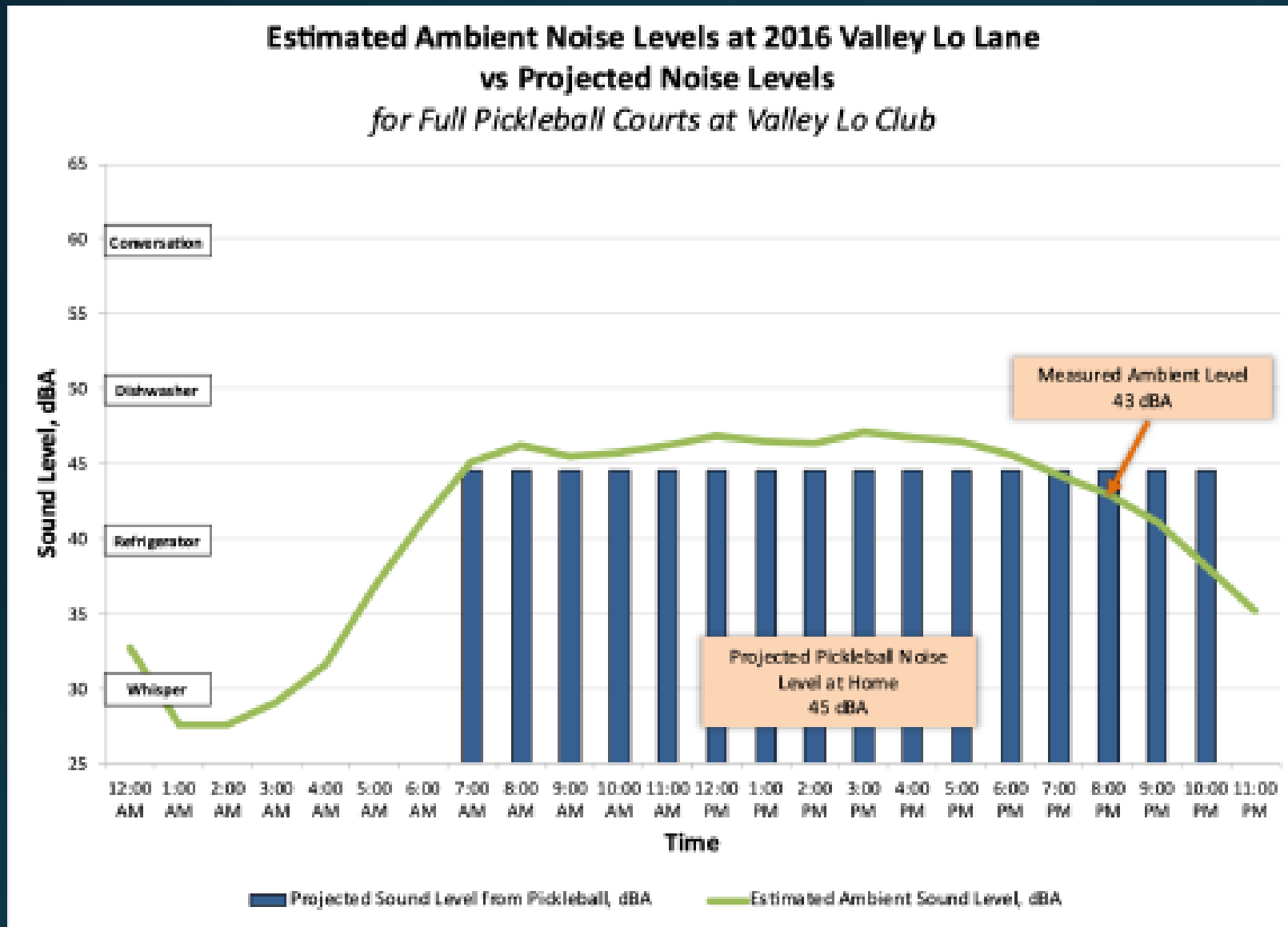
Valley Lo Courts

- 721 – 1,359 feet from homes on Lake
- Minimum of 1,168 feet from homes to the north



Acoustic Associates Report

Ambient noise is greater than pickleball noise 7 a.m. until 8 p.m. on weekdays without sound barrier.



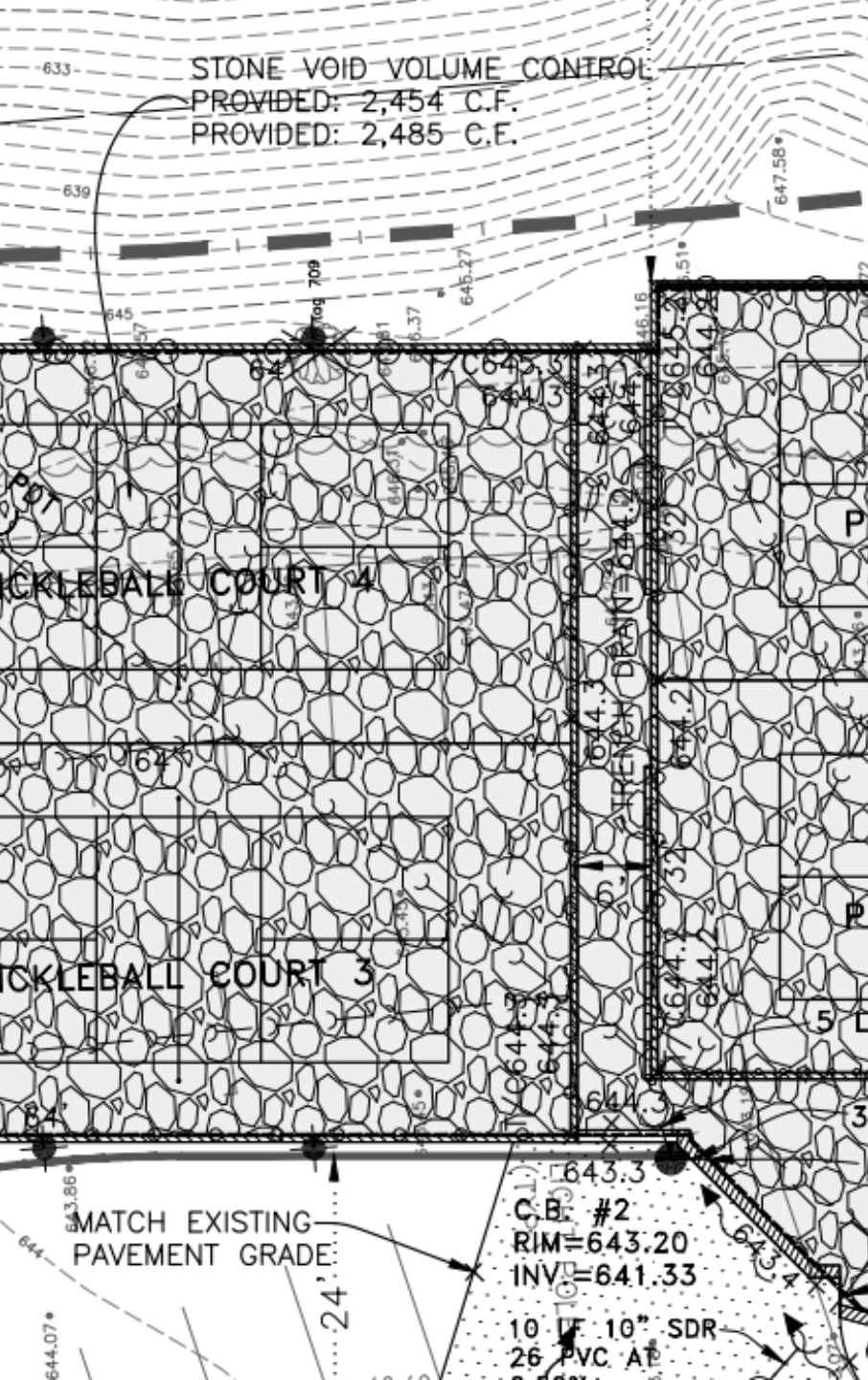


From the southeast
(closest home)
Valley Lo Lane



From the east

Valley Lo Lane



Stormwater

- Install new volume control stone layer and then tie into the existing stormwater management system
- Reviewed by VOG engineer and MWRD
- Complies with all regulations



VL Lake HOA Requests – Sound

March 5th HOA letter

- ✓ Acoustic fence at 10' around the courts
- ✓ Quiet paddle technology
- ✓ Low noise balls
- ✓ Hours limited
- ✓ No sound system

VL Lake HOA Requests – Light

March 5th HOA letter

- ✓ Fencing and hedges on east side of south lot to block headlights
- ✓ Parking lot lights directed to lot surface without glare escaping to neighborhood
- ✓ Lowest pole height possible (and reduced number of poles)
- ✓ Court lights have cutoffs to eliminate glare



HOA Requests – Lights

March 5th HOA letter

- ✓ Address unshielded lights (maintenance building)
- ✓ Parking and court lights off when not in use and remain off until needed
- ✓ Preserve existing trees as much as possible
- ✓ Parking lot lighting should use warm light, not bright white light



Thank you!

We appreciate your
consideration.