

Glenview Newsletter

CAR-RT-SORT
Bulk Rate
U.S. Postage
PAID
Glenview IL
Permit No. 177

To:
POSTAL CUSTOMER

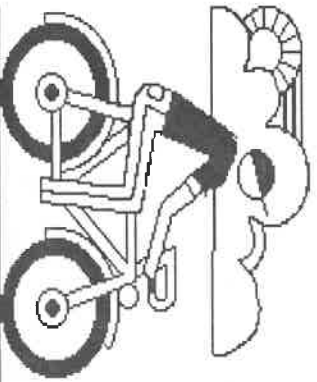
April 15 - May 15, 1988

GVTV, local cable station:

Programs created by volunteers feature local organizations and village activities. See Channel 63's Community Bulletin Board for upcoming shows, community events, job announcements, and social notes (send yours to GVTV, c/o the Glenview Village Hall, 1225 Waukegan Rd.).

If you want to participate at the station, TV workshops begin again in June. Call Mary Bennin, 724-1700, X265.

Tune to the following local cable-access channels: 21 (Cablenet), 63 (village) 82 (Glenbrook South), 83-85 (other schools), 87 (parks), and 88 (library), to find out what's happening in the Glenview community.



Attention, bikers:

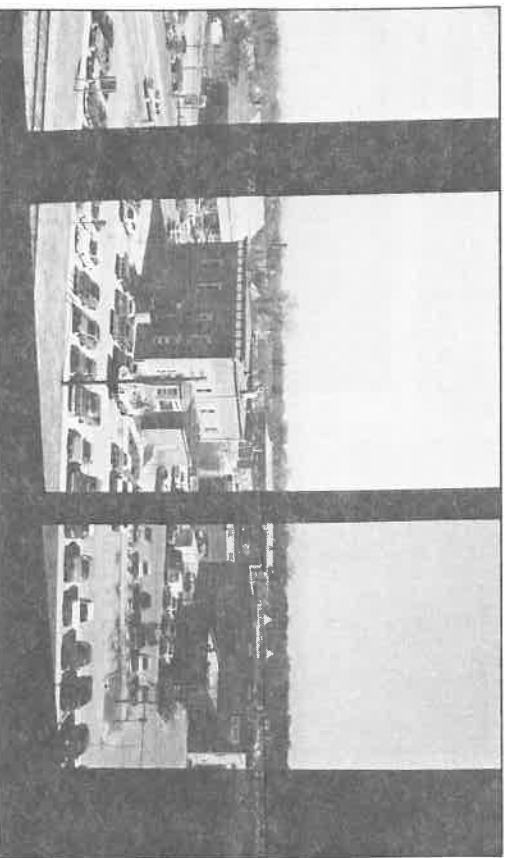
On Saturday, April 16, a free **Bicycle Safety Rodeo** will be held on the grounds of the Glenview Community Church (Glenview Rd. at Elm St.), 9am-1pm, cosponsored by the Glenview Police Department, the Glenview Optimists' Club, and Glenview Women of Today.

Bring your wheels and have them checked for safety by the experts, who will also provide licenses for bikes not already registered with police.

Your bicycle should be licensed, so that — in case of theft and recovery by police — you can get it back.

Unlicensed wheels are picked up every summer, and cannot be returned because police have no idea to whom they belong. (In accordance with state law, they are held for 6 months and then auctioned as unclaimed property.)

If you can't make it to the rodeo on April 16, you can license your bike any weekday at the police station, 1215 Glenview Rd., between 8am and 8pm.



The oldest, as seen from the newest

The Glenview House, oldest public building in the village, is framed in the center pane of a fifth-floor apartment window in Patten House, Glenview's newest building, a residence for senior and handicapped adults. (The Glenview House, originally a hotel, was in effect the first Glenview village hall, as the original village board met on its third floor, which was destroyed by fire many years ago and never rebuilt.) For more on Patten House see photos inside. (*Mimi Chan photo*)

Appearance Code ensures acceptable standards of local development

Because what we see influences our general well-being, Glenview has an Appearance Code — a guide to how buildings and properties should look, be they for business, commercial, multifamily, industrial, or public use.

The code assures that materials and designs are appropriate to each development's surroundings, and provides for an Appearance Commission to pass upon architects' exterior-design drawings and site and landscape plans before Certificates of Appropriateness are issued.

The commission, which is required to include at least three registered architects and one Glenview business owner, com-

pares plans for each new development to the overall plan for the village, evaluating conformance to existing ordinances, logic of design, aesthetics, use of exterior space, architectural character, material selection, harmony with neighboring sites, maintenance aspects, and traffic circulation, both vehicular and pedestrian.

Residents, developers, and business owners interested in observing Glenview's appearance standards may attend Appearance Commission meetings on the second and fourth Wednesdays of every month, 8pm, at the Glenview Village Hall, 1225 Waukegan Road. (Check the village calendar in each month's *Glenview Newsletter*.)

Garbage regulations — review for newcomers:

New residents as well as those who have lived in the village for some time may not know that garbage (household waste) is picked up at the service area of each residence or multifamily complex (back door, side door, garage door, or some other designated spot within private property lot lines) — a service now included in your garbage rate. (Cans are therefore not allowed at the curb.) Cans may be of noncorrosive metal or heavy plastic, and must have tight-fitting lids and handles. They may be any size from 10 to 32 gallons.

Disposable containers (plastic bags up to 32-gallon capacity) containing yard refuse, newspapers, or hedge trimmings, and bundles of branches no longer than 4 feet, may be placed at the curb after 7pm on the night before collection.

Garbage and dog droppings are attractive to rodents. The Glenview Health Department reminds you to carry tongs or plastic gloves and sealable plastic bags when you walk your dog. Pick up droppings promptly and take them home for proper disposal in toilet or garbage can.

Welcome, Patten House —



FALL, 1986: Firefighters inspect abandoned Melzer farmhouse to make sure no utility connections are present and buildings are safe for demolition.



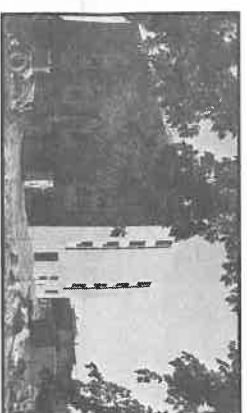
Demolition contractor takes down the landmark farmhouse, and is about to begin razing an outbuilding. (Note old oak tree in left foreground — it will be saved.)



Buildings razed and debris carried away, tractor levels site and prepares to cover low spots with gravel. All views are from the south (Dewes Street) side.



WINTER, 1987: Patten House begins taking shape, brick by brick, in classic from-the-ground-up masonry method.



SUMMER, 1987: Topping-out ceremony is held in July. Most windows and doors are installed, and the oak tree looks healthy.



FALL, 1987: Top soil has been spread, and curbs for driveway are ready to be poured. (Landscaping was completed before snowfall.)



SPRING, 1988: Building completed, most residents in, and buds swell on the old oak tree.

Patten House, a 5-story atrium structure named for the late Edward Patten, Glenview Village President from 1973 to 1977, contains 23 studio apartments averaging 401 square feet and 57 one-bedroom apartments averaging 524 square feet. Five bedroom apartments are designed for wheelchair residents, and four for the handicapped. Floor plans vary pleasantly.

Apartments are decorated in a neutral color; bedrooms and living rooms carpeted, baths and kitchens tiled. Kitchens have electric ranges and refrigerator/freezers; bedrooms (or

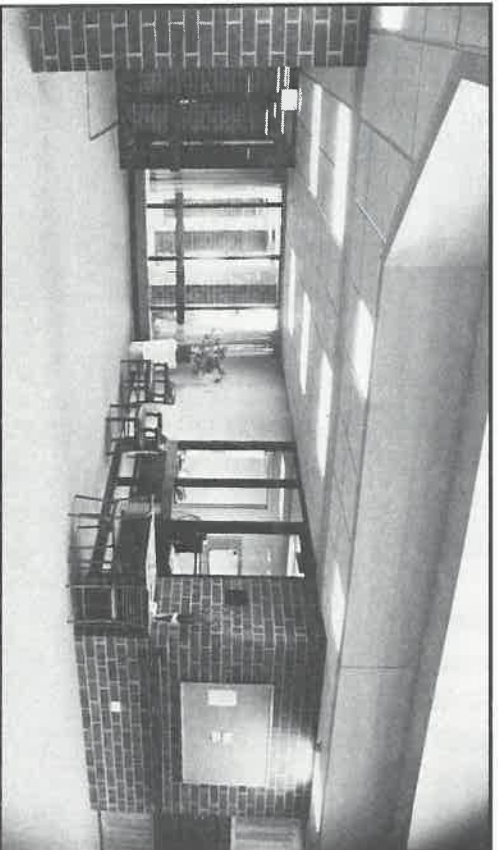
studios) and baths are equipped with emergency signals monitored 24 hours daily by a resident paid for the service.

Baseboard heating and a sprinkler system are provided. Residents may buy, install, and operate telephones and approved air conditioners and at their own expense. The building's emergency generator provides power in case of electrical outages.

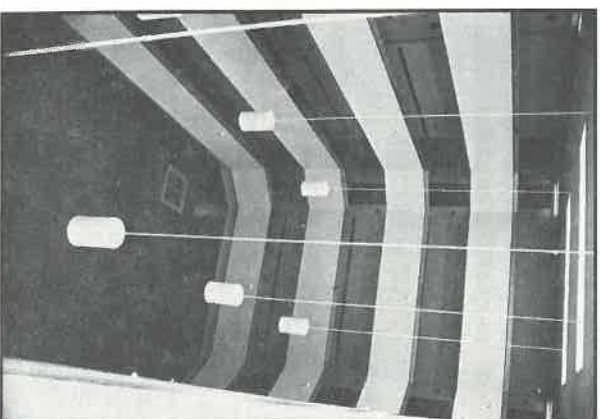
The building is owned by Glenview Elderly Housing, a nonprofit corporation. Construction was financed by a 40-year federal mortgage.

Glenview provided some of the amenities, and selected Evangelical Hospitals Corporation, a management firm experienced in handling senior residences, as the building's sponsor. Business manager Arthur W. Christoffersen, a Glenview resident, is on duty during business hours.

A public Open House will be held Sunday, May 15, at Patten House (corner of Glenview Road and Harlem Avenue), and you are invited to see the building's common areas for yourself. Please watch local papers for hours of the event.



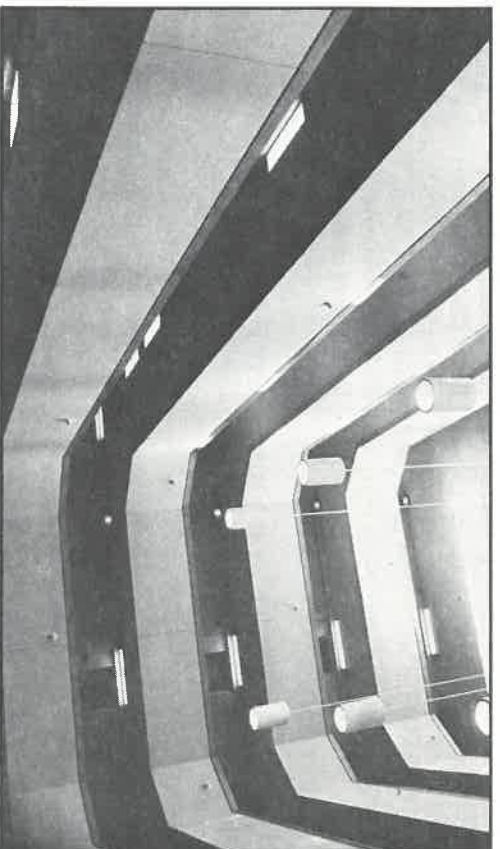
Lobby, with entrance at left and business office at right center. Individual mailboxes for residents are to right of bulletin board.



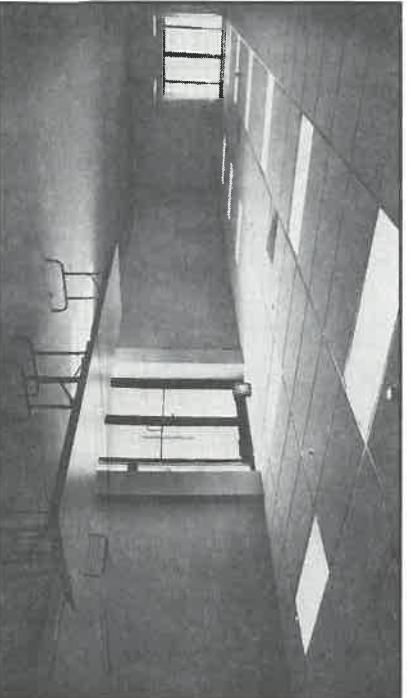
View from 5th floor down to atrium floor. Plants and furniture will eventually fill the floor space.



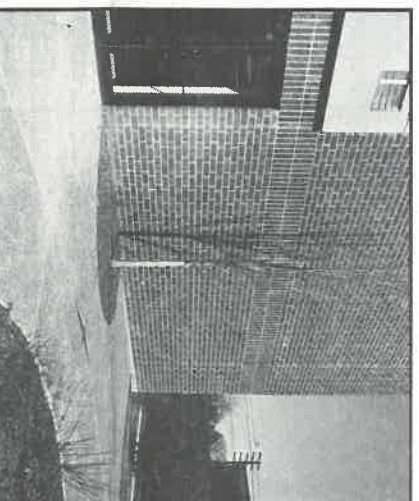
Christoffersen stands in kitchen adjoining large community room.



View from atrium looking up to skylights.



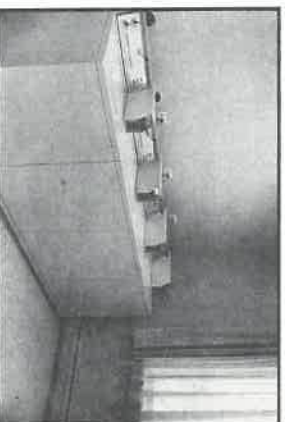
Community room will eventually have tables and chairs for television, reading, writing, and special events. Smaller common room is available for crafts and games.



Patio area outside community room will be furnished with benches and other outdoor furniture.



Some units feature pass-throughs from kitchens; others have short hallways to kitchen areas.



Coin-operated washers and dryers for resident use are on the ground floor. Two large self-service elevators operate between ground and fifth floors.



(Photos by Milini Chan)

Glenview Park District

SUMMER DAY-CAMP and LEISURE ENRICHMENT CLASSES registration is now open at the Glenview Park District office, 1930 Prairie St. For information on camp openings call 724-5670. *

PRESCHOOL SPORTSFEST (parents and children participate), Sat., April 16, 10-11:30am, Rugen Center.

WORKSHOPS at Rugen Center, 901 Sherman Rd., include Paper Piercing (April 20, 7:30-9:30pm, \$11); Rag Baskets (April 25 and May 2, \$19 for both); *Scherenschnette* (snipping), April 27, 7:30-9:30pm, \$15); Cornhusk Dolls (May 5 and 12, \$29 for both).

TENNIS CLUB LOTTERY for permanent fall-winter court time, April 20 and 21. Summer indoor tennis lessons June 13 - July 21 (club membership not required); inquire at club, 1800 Wagner Rd.

CREATIVE CONSPIRACY (children make gifts for Mother's Day): Sat., April 23, Rugen Center (register at the park district office) — Grades 4-6, 9:30-11:30am; K-3, 11:30am-1:30pm; \$13 includes materials and instruction.

PLANT-A-TREE (preschoolers), Wed., April 27, 1pm, Rugen Center, for Arbor Day. Register by April 22 at the park district office (\$1; registration limited).

MEN'S SPRING TUNE-UP SOFTBALL (16-inch), April 29 - May 1 weekend, benefits Glenview Citizens for Drug/Alcohol Awareness, Flick Park; 22 teams, double elimination competition. For details call Dan Frase, 724-4778.

JR. HIGH ACTION DANCE (last of school year), Fri., April 29, 7:30-9:30pm, Springman Jr. High (open to 7th and 8th graders with membership IDs).

GLENVIEW PARK GOLF CLUB restaurant opens for weekly Wednesday night chicken/fish fries May 4 (no reservations needed); Mother's Day brunch Sun., May 8, 10am-2pm (reservations required), call 657-3200 or 724-0250).

DOG OBEDIENCE CLASSES (animals at least 6 months with proof of Parvo, distemper, and rabies shots; owners at least 10 years old): May 5 for 8 Thursdays, 7 and 8pm, Glenview Ice Center, 1851 Landwehr Rd., \$34; register at Glenview Park District office.

SUMMER REGISTRATION (brochures out end of April; call 724-5670 if you have not received by May 5): Mail-in deadline, 5pm Fri., May 13; walk-ins beginning May 18, 9am.

JUNIOR GOLF COMPETITION (ages 13-18 by Dec. 1) — register at Pro Shop beginning May 16 (\$10); 18 holes played Mondays, June 20 - Aug. 1.

ANNUAL ICE SHOW ("On the Ice with WGC"), Fri., May 20, 7pm; Sat., May 21, 2 and 7pm; Sun., May 22, 2pm; Glenview Ice Center; tickets at the center: \$2 youth, \$3 adults, \$5 reserved.

JACKMAN PARK is being redesigned and will have old-fashioned park benches, lamps, brick sidewalks, and a gazebo bandstand. (Playground will be moved to the south rim.) Dedication: June 26, 2pm.

"SALUTE TO GLENVIEW'S GOLD,"

theme of this year's 4th of July celebration, honors residents and organizations whose community efforts and achievements deserve recognition. No tax money is used for Independence Days; please donate by using the form enclosed with your water bill or the one in the summer Glenview Park District brochure.

The Glenview Park District Senior Center, 901 Sherman Rd. (Rugen Center), has many programs and free services for older residents. For more information call 724-4793 9am-4pm Monday through Friday.

PODIATRIST SERVICE available April 18, May 6, and May 16, by appointment.

DEFENSIVE DRIVING (AARP course) meets April 27 and 29, noon to 4pm (\$7 for both sessions). Register in advance.

RULES OF THE ROAD for those renewing driver's licenses (free course): May 11, 1-3pm. Register in advance.

3-DAY TRIP TO HOLLAND MICHIGAN: May 16-18 (call to see if there is still an opening) — \$249 per person, double-room accommodations; \$276 per person, single-room.

CHARTERED FISHING TRIP May 25 (\$25) — call the center for details.

Glenview Public Library

FOR ADULTS:

PERENNIALS (COLOR-CUED GARDENS), Thurs, April 14, 7:30pm — new program with Joanne Loebel.

HOPE AND GLORY (R-rated feature film) — Fri., Apr. 15, 7pm (free tickets Sat., 4/2, 9am, at Info. Desk).

* **JIMMAY** spins tales of growing up in McHenry County, midwest humor and folkways for the whole family — Sun., Apr. 17, 3pm (part of the National Library Week celebration). Tickets one week in advance (limit, 5) at Adult Services desk.

INTERNATIONAL NIGHT, Wed., April 20, 7:30pm — *Portugal*, with Ransom Slayton.

GLENVIEW AREA CREATIVE WRITERS' LEAGUE, Tues., April 26, 7-8:45pm — Critiques of original poetry, prose, and essays by league members. Guests welcome.

OLD WORLD WISCONSIN, Sat., April 30, 8am-7pm — Falicia Tour by bus to the outdoor living museum, recreating early ethnic farm communities, in Kettle Moraine State Park. Lunch at the Clausung Round Barn; tram transportation between villages. \$40 all-inclusive; sign up now at the Information Desk.

SENIOR BOOK DISCUSSION: Mon., May 2, 12:30pm — *Laura: The Life of Laura Ingalls Wilder*.

MAY IN YOSEMITE, Fri., May 6, 7:30pm — Slide presentation by award-winning nature photographer Joan Busta.

BOOK DISCUSSION: Mon., May 9, 7:30pm — *I Know Why the Caged Bird Sings*, by Maya Angelou.

The library has a collection of 1,500 books printed in large type for patrons who prefer them. These books are in the northwest corner, first floor.

FOR CHILDREN:

Tickets for children's programs available in Children's Room one week in advance with Glenview Public Library cards.

BATTLE OF THE BOOKS final meet, Sat., Apr. 16, 2pm — 5 top teams battle for first place. (Party in May for winners.)

* **KIDFOLK** (grades 1-5): Wed., April 20, 4pm — Ruth Bogan sings, tells tales of Chicago and Illinois; kids join with homemade instruments.

* **BASEBALL TRADING CARD SWAP** (grade 2 and up), Fri., April 22, 4-5:15pm — Card shop owner discusses collecting/trading; chance to win cards.

* **THE LION, THE WITCH & WARDROBE** (grades 2-6), Sat., April 23, 2pm — Skyline Theater production.

SHARKS (grades 1-6), Sat., April 30, 2pm — with Jessica Eslinger; limit 60; sign up starting Mon., April 11.

MR. CRAIG'S MIMÉ (grades K-up), Sat., May 7, 2pm — juggling and magic.

* *National Library Week programs.*

JOBS FOR SENIORS places people 50+ in permanent or part-time jobs (no babysitting) up to management levels. Placement is free to both workers and employers, a service of the North Shore Senior Center, Winnetka. Call 446-8750.

AVAILABLE AT THE VILLAGE HALL: The State's Attorney's *Consumer Research Guide*, and tax-relief (Circuit Breaker and Pharmaceutical Assistance Grant) claim forms for ages 65+ (16+ if disabled) who meet state income guidelines. See Carol Karol.

FEDERAL AND STATE LAWS prohibit age discrimination in employment, housing, credit, public accommodations, and public services. Anyone who has been a victim of age discrimination should call or write: Dept. of Human Rights, 100 W. Randolph (10-100), Chicago 60601 (917-6200).



United Way

UNITED WAY OF GLENVIEW - GOLF annually re-evaluates the community's available services, in order to determine which new agencies should be accepted, and how beneficiaries shall be funded.

Your help is needed. Please take a few minutes to answer the following questions and return the form, by **Monday, May 16**, to the address given. Thanks for your help.

Please return by 5/16/88 to:
United Way of Glenview-Golf
2320 Glenview Road
Glenview IL 60024

1 — What unmet or only partially met needs do you see in Glenview?

2 — What new services or programs would you like to see?

For senior residents ... Carol Karol, Glenview's Senior Coordinator, has an office at the Village Hall, 1225 Waukegan Rd. (lower level), and is available there Tuesdays and Wednesdays, 9am to 1pm, and all day Thursdays, for free consultation with elderly residents and/or their families. For more information call 724-1700 X232. See the Senior News Display in the Finance Department office (upper level), offering free literature of importance to the elderly.

#

OLDER WOMEN'S ISSUES, a program by the executive director of the North Shore Senior Center, will be given Thursday, April 28, 1pm, at the Glenview Senior Center, 901 Sherman Rd. Those planning to attend please register in advance by calling Carol Karol.

WOMEN TAKE CARE, a new book by the Older Women's League, reports that 2 million American women suffer financially and physically because of unpaid work in caring for spouses, parents, other family members, or friends.

PSYCHOLOGICAL AND AUDIOLOGICAL testing and magnetic-resonance imaging for healthy elderly participants pays \$15 per study by medical researchers at the North Chicago Medical School. Call Sandi Johnson, 446-8750.

NURSING HOME ABUSE should be reported to the State's Attorney's Nursing Home Hotline, 443-4377.

CRIS (CHICAGO LAND RADIO INFORMATION SERVICES) broadcasts news and community information to the print-handicapped via prehumed receivers that are loaned free. Call CRIS, 645-9800.

A LIVING WILL (now legal in Illinois, free, and without need of special documentation or a lawyer) states that if you become physically or mentally disabled

with no reasonable chance of recovery, you do not want to be kept alive by artificial means. (You may also appoint someone to act as your Power of Attorney to make health-care decisions according to your specific wishes. The Power of Attorney does require an official form, for which there is a small fee.) For more information call the North Shore Senior Center, 446-8750.

FREE HOTLINE for reporting Medicare fraud, waste, and abuse: 1-800/368-5779. Or write to Box 17303, Baltimore MD 21203-7303.

THE VILLAGE BOARD ...

Meets on the first and third Tuesdays, 7:30pm, at the Village Hall (lower level), — see calendar on page 4 of each newsletter issue.

Visitors are welcome at Village Board meetings. To address the board on matters other than items on the agenda, arrangements should be made 10 days in advance by calling the Village Manager's office, 724-1700. Emergency matters may be addressed at any meeting, after agenda items have been covered.

APPROVED: 1-lot subdivisions at 1125 Lincoln Street, 1213 Church Street, and 1832 Prairie Street; operation of a farmers' market (8am-noon Saturdays during the summer at the commuter-parking triangle on Lehigh Avenue opposite the Milwaukee Rd. station); recapture of utilities in Windsor Estates subdivision; extension of conditional use (new construction) at Austin Liquors, Waukegan Road at Chestnut Avenue; pension credits for executive librarian; renewal of water-meter-reading contract for 5 years with Pease Services, Inc (at increases in \$50 increments for first 3 years); purchase of one 2-1/2-ton dump truck from Freeway Ford, Lyons, Ill. (\$35,500), one aerial truck from Sauber, Virgil, Ill. (\$30,460), and one 1-ton dump truck from Currie Motors, Glenview (\$13,747) — all for village public works/water departments use; Northwest Municipal Conference baelfill proposal and interim annual financing not to exceed \$1 per capita. ... **ALLOCATED** from local Motor Fuel Tax funds: \$40,000 for 5-year maintenance of village streets; \$36,000 (maximum) for engineering for improvements (storm and sanitary sewers and concrete pavement) on Prairie Street, from Roosevelt Avenue to Elm Street... **REZONED** 1614 Glenview Road for planned development (town houses). **ANNEXED AND REZONED:** 8 acres at 2760 Willow Road; 2895 Willow Road; northeast corner, Willow and Pfingsten Roads; 2660 Pfingsten Road. . . . **REAFFIRMED** Glenview's interest and participation in the original Technology Agreement.

The Glenview Newsletter

published monthly since 1967 by
the Village of Glenview
1225 Waukegan Road
Glenview IL 60025
312/724/1700

Copyright © 1988
No reproduction without
written permission and credit line.

Village Officials:

Trustees —
President, James W. Smirles
Robert Browne, Charles K. Esler, Jr.
Nancy Firfer, Scott J. Helton
Ronald V. Norene, Lowell Scott Weil

Manager/Clerk, Paul T. McCarthy
Asst. Mgr., Craig G. Anderson
Asst. to Mgr., Joe Wade

Editor/Typesetter: Mini Chan
Reproduction:
Glenview Fire Department

Thanks for your help; it is much appreciated.



Bulletin Board

As space permits, we will include announcements of upcoming nonprofit, nonsectarian, nonpartisan events of interest to a large part of the community. Items for the May 15-June 15 issue should reach the Village Hall by noon Monday, May 23, or the editor (657-3865) by Monday, May 30.

FRIENDS OF MARYHAVEN hold their annual fashion show luncheon Wed., April 20, at Allgauner's Restaurant, Northbrook, to fund renovation of 2 main bathrooms and new hydro tubs for therapy. Please call 729-3662 or 729-0830 for reservations.

GLENVIEW NEWCOMERS invite new residents to an open meeting on Wed., April 27, 7:15pm, at the Glenview Public Library (1930 Glenview Rd.). Refreshments will be served. For more information call Pat Rubens, 998-6986.

A **SPRING FLING** will be held by the Glenview Historical Society Thurs., April 28, 6:30pm, at Hackney's on Lake.

GLENVIEW PUPILS of District 34 recently spent 3 weeks in southern France, part of the cultural-exchange program co-sponsored by the Association of French-American Classes. French pupils repay the visit in April, when French flags fly in Glenview between April 26 and May 17.

THE 37th ANNUAL ANTIQUES SHOW will be held at the Glenview Community Church (Glenview Rd. at Elm St.) May 3 (5-9pm), May 4 (10:30am-9pm), and May 5 (10:30am-4pm), benefiting Chicago-area charities. Lunch, tea, dinner, and baked goods available; tickets \$3 at church office until April 29; \$4 at door.

CONGRATULATIONS, Jim Nettleton, Michele Bleser, Ray Ridolfi, Pat Quinn, and Peter Bury, Civic Award Winners.

HELLO, DOLLY, this year's Glenbrook musical, will be staged at Glenbrook North's Sheely Center, Wed.-Sat., May 4-7, 8pm. Tickets \$5, all seats reserved. Call 998-6100, X416.

RHEUMATOID ARTHRITIS sufferers between 16 and 75 may qualify for a program to evaluate an anti-inflammatory drug new to this country. Physician conducting the research is on staffs of Lutheran General and Holy Family Hospitals. Participants must be taking anti-inflammatory medicine regularly and no Methotrexate, Imuran, or Cytoxan for at least 3 months prior to the study. For more information call 297-0709.

A **GARAGE SALE** Fri. and Sat., May 6 and 7, 9am-4pm, at Willow Park Field House (2600 Greenwood (enter from Willow Rd.), benefits Earl J. Goldberg Aplastic Anemia Foundation, an affiliate of Children's Memorial Hospital, Chicago. Donations of clothes and household goods will be appreciated — call 298-9408

DAY CARE IN YOUR HOME? Those interested in setting up such an enterprise may attend a meeting Wed., May 11, 9:30-11:30am, by Wesley Day-Care Center of Glenview and the Day-Care Action Council of Illinois, at Child-Care and Development Center, Lunt and Crawford, Lincolnwood. For details call 729-0184.

GLENVIEW YOUTH SERVICES, a nonprofit social-service agency, invites interested adults to call 724-2620.

ANNUAL ORT SYMPOSIUM: Thurs., May 12, 7:30pm, at Highland School, 9700 Crawford, Skokie. Topic: AIDS, and how it relates to children. Panel members: Paul Nilsen, principal, Central School, Wilmette; David Kula, attorney and civil rights expert; Dr. Don Heiman, immunologist, and Terri Reanick, R.N., who treat AIDS patients. Q&A session follows. Free and open to the public.

TOUGH LOVE PARENT SUPPORT meets every Tuesday, 7:30-10pm, at Glencoe Community Center, 999 Green Bay Road, Glencoe, to discuss children's behavior problems. For more call 272-6801.

GIRL SCOUT TROOP 313 — Meighan Bixler, Sandy Cunningham, Sharon Gallagher, Heather Helt, Jessica Knowles, and Brandi McKinney, under leadership of Mary Cunningham — recently volunteered to clean up Roosevelt Park as a community project, filling 5 large trash bags with winter debris. (Thanks, Girl Scouts!)

SIR TOPS, a nonprofit weight-loss group for men, meets every Sunday morning at 9am in Cuntliff Park Field House, 540 Echo Lane (turn south on Echo from Glenview Rd.; Echo is east of Harms Rd.). Interested men welcome — \$10/month membership.

ADULT DAY CARE is available at Busse School, 101 N. Owen, Mt. Prospect, under a trained professional staff. Call Pat Rubenzas, Parkside St. Services (member, Lutheran General Health Care), 696-7694

SUN.	MONDAY	TUESDAY	WEDNESDAY	THURSDAY	FRIDAY	SAT.
April 17	18	Slim and Trim 7:30pm Lyon School Village Board 7:30pm, Vg. Hall	Library Bd, 7:30pm Library (1930 Glenview Rd.)			23
24	25	Slim and Trim Plan Commis-sion, 8pm	Appearance Com. 8pm, Vg. Hall	27	28	29
May 1	2	Last SLIM AND TRIM of the season! (Back in the fall!) Village Board 7:30pm, Vg. Hall	4	5	6	7
8	9	Zoning Bd. of Appeals 8pm, Vg. Hall	Appearance Commis-sion 8pm, Vg. Hall	Park Bd. 7:30pm, Park District office (1920 Prairie)	12	13
15	16	Zoning Bd. of Appeals 8pm, Vg. Hall	Appearance Commis-sion 8pm, Vg. Hall	Park Bd. 7:30pm, Park District office (1920 Prairie)	12	13
15	16	Village Board 7:30pm Village Hall	Library Bd. 7:30pm Library		19	20
15	16	Village Board 7:30pm Village Hall	Library Bd. 7:30pm Library		19	20
15	16	Village Board 7:30pm Village Hall	Library Bd. 7:30pm Library		19	20

PUBLIC OPEN HOUSE at PATTEN HOUSE
(Watch local press for hours.)

