

# Glenview Newsletter

Village of Glenview  
1225 Waukegan Road  
Glenview IL 60025

CAR-RT-SORT  
BULK RATE  
U.S. POSTAGE  
**PAID**

Glenview, IL  
Permit No. 177

To:  
Postal Customer

August-September, 1986

Deadline for the next issue: WEDNESDAY, AUGUST 20

## Daytime is prime time for burglary

**HOW TO BURGLARIZE HOMES** in affluent suburbs: Drive around between 7:30 and 8:30am and watch people leave home. If a man and a woman leave dressed for work, you know the house is unoccupied, at least for the morning. — "Advice" from a convicted burglar.



"Prime times" for burglary in the suburbs are late morning or early afternoon, according to Suburban Burglary: A Time and Place for Everything—by George Bengert, professor of Criminal Justice, Temple University, and John Wasilchick of Delaware County (Pennsylvania) Intergovernmental Affairs.\*

The authors interviewed 40 burglars at the Delaware County Prison who specialized in stealing from suburban homes. Among their findings:

- Women, formerly the guardians of the home, have now joined the work force, leaving houses unoccupied during predictable blocks of time.
- Experienced burglars spend no more than 2 minutes forcing entry and 3 to 5 minutes inside the house.
- **The most effective deterrent:** A secure home that makes forced entry hard, long, or noisy. Burglars skip such places, because time is limited.
- **The next most effective deterrent:** "Nosy neighbors." In affluent suburbs, however, the neighbors (if they're home in burglary "prime time") tend to politely mind their own business.

\*Springfield, Ill.; Charles C. Thomas, 1986 (\*\$18.50).

**GLENVIEW BANKS** have had recent incidents of fraudulent check passing. After meeting with representatives of local financial institutions, Glenview police have issued the following warning:

Never crumple and toss away a deposit slip on which you have made an error. Destroy it by shredding thoroughly (or take it with you for shredding later) so it can't be pieced together and fraudulently used. Banks can't be responsible for undestroyed documents left as trash.

Remember: Your checking account number and signature are valuable — treat them the same as credit cards and cash.

**Are you sure your home is secure? Why take a chance, when a FREE home-security expert is available for the asking?** John Good, Crime-Prevention Officer of the Glenview Police Department, will conduct a security survey of your home, at your convenience. See details on page 3.

## Public Works Center to begin Phase II

The Village Board has awarded a \$973,200 contract for construction of the second of 3 phases of the Public Works Center building program on Sherman Road, at the perimeter of the Glenview Naval Air Station.

Phase II includes a concrete yard, a fueling area with canopy to protect gasoline pumps and personnel, a brick wall matching the Phase I award-winning\* building completed in 1984, and a storage area to accommodate 2,000 tons of salt — enough for an entire winter.

The facility will replace the fueling station and salt bin at 1222 Depot Street, where only 300 tons of salt can be stored, making salt purchases more expensive than buying for an entire season.

The new fueling facility, which dispenses gasoline for all village vehicles, will enable better security and record keeping by means of a card-activated computer system.

The new Public Works Service Center has computer capability for month-ly and year-to-date records of miles of streets swept, feet of sanitary sewers cleaned, manhole covers replaced, water mains broken and repaired, signs needed, parts on hand, and number of hours required for each job — information necessary for budget, inventory, overhead breakdown, workers' compensation, accountability, productivity, and projection.

\*The American Institute of Architects award for good design, as one of the 10 most distinguished buildings erected in the Chicago area during 1984.

DISTRICT 225 (high school) opens Tuesday, September 2. DISTRICT 34 opens Wednesday, September 3, (half-day only, kindergarten excepted); first full day, with kindergarten: Thursday, September 4. Parents with questions please call district offices.

## Library levy approved

Glenview Public Library trustees recently approved a 1986 tax levy of \$937,740 — down 1.2% from 1985. (Two tax abatements reduced the '85 levy by \$100,000.)

Trustees will consider a budget of \$1,207,442 for 1987 on Wednesday, August 20, 8pm, in the Maynard Room of the library building, 1930 Glenview Road. Interested residents are invited to attend and be heard. Copies of the '87 budget will be available.

Eventually the pump-monitoring system in the existing (Phase I) building will have telemetry for monitoring the pumping stations and keeping accurate performance records.

The building program has already improved Public Works morale, and Phase II will offer better services for fire and police personnel, whose vehicles are both fueled and repaired by Public Works.

Phase III, a vehicle-storage facility, will connect the existing building and the new yard, in the area currently occupied by a residence whose owners have an agreement with the village for life tenancy.

(See site plan, page 2)

## New water-meter installations begin

The municipal code has recently been amended to require installation of remote-reading water meters, wherever possible, through exterior walls, adjacent to gas meters.

The Glenview Water Department is currently replacing meters in central Glenview, and will continue at the rate of 600 per year until all customer properties that can accommodate remote meters have been served.

Those to be served are instructed in advance, by letter, to call the Water Department and make appointments during working hours.

## Park District and Senior activities

**ROOSEVELT POOL** closes Sunday, August 24, at 3pm, with the annual "Goldfish Day" activity. Until then, hours are 1 to 5pm and 6 to 8pm.

**PLICK POOL** will be open through Labor Day, Monday, September 1. Until then, hours are 1 to 5pm and 7 to 9pm.

**DAILY FEES** at both pools are \$2.50 per person (children 3 and younger admitted free with adults). Both close whenever temperatures are below 68F.

**"LEFT'S GO CAMPING"** at Lake Sarah (Effingham, Ill.) is open to singles and families (children must be accompanied by adults) from Friday, August 22 through Sunday, August 24, \$48 per person covers transportation, food, admissions, and activities. Register at 1930 Prairie Street.

**WANTED: MEN AND WOMEN** for part-time employment in the Glenview Senior Center's Handyman Program, to help older residents with small household jobs (replacing window panes, painting, unsticking windows and doors — no electrical or plumbing work. Please call the center, 724-4793. (Please note: The center will be closed between August 23 and September 8.)

## Babysitter school August 16

On Saturday, August 16, the Glenview Fire Department will offer a free Babysitter School for ages 9-18, 9am-2:30pm, at the Fire Station, 1815 Glenview Road. To register, call the Fire Department nonemergency number, 724-2141.

Babysitter School teaches the basics of first aid, CPR (cardiopulmonary resuscitation), home security, and fire safety. Attendees please report at 9am with bag lunches, notebooks, pens and pencils.

## The Glenview Newsletter

Published monthly since 1967  
by

The Village of Glenview  
1225 Waukegan Road  
Glenview IL 60025

724-1700

Copyright © 1986

(No reproduction  
without written permission  
and credit line)

### VILLAGE OFFICIALS

**President** ..... James W. Smirles  
**Clerk** ..... Katherine G. Appert  
**Trustees** ..... Charles K. Esler, Jr.  
Scott J. Helton  
Ronald V. Norene  
Della Brady Stowe  
Lowell Scott Weil  
James M. Weiss

**Manager** ..... Paul T. McCarthy  
**Asst. Mgr.** ..... Craig G. Anderson  
**Asst. to the Mgr.** ..... Joe Wade

**Editor** ..... Mimi Chan

Printing services  
by the Glenview Fire Department

**THE GLENVIEW SENIOR CENTER** is at 901 Sherman Road, with many programs and free services available. Call 724-4793 for more information about any of the activities listed.

**ANNUAL RUMMAGE SALE** Thursday and Friday, August 14 and 15, 10am-3pm, proceeds to support center activities.

**TRIPS:** To Wisconsin (Sunday-Tuesday, August 17-19); to Arlington Race Track (Friday, August 29). Call the center for information.

**THE CENTER WILL BE CLOSED** Saturday, August 23, through Monday, September 8.

**DEFENSIVE DRIVING** (2 sessions): Wed. and Fri., September 24 and 26, noon to 4pm (\$7); register in advance at the center and attend both sessions. Licensed drivers 55 and older who complete the course may be eligible for reduced insurance rates.

**RULES OF THE ROAD**, free refresher course for drivers, Wednesday, September 10, 1-3pm.

**MEN'S PROGRAM** (open to all retirees), Tuesday, September 23, 10-11:30am. Free coffee and refreshments. Speaker: Richard Johns, General Superintendent, Glenview Park District.

**20% DISCOUNTS** to ages 65 and older on Park District fall/winter classes — crochets, knit, quilt, bridge, current events, humanities, Great Decisions, Book Club, exercise, investments, etc. (Senior Center also offers many free programs.) Call for information.

### REGULAR EVENTS:

**Counseling**, Tuesdays, 10am-noon. ...  
**Community Advisor**, Thursdays, 11am-noon. ...  
**Free Blood-Pressure Tests** (open to the public), Thursdays, 11am-noon. ...  
**Visually-Impaired Club**, first Friday every month. ...  
**Information Desk**, open 5 days a week till 4 for assistance, referral, senior benefit books, discount sheets. Call for information.



Glenview Public Library

**EXPLORE 4 SHIPWRECKS** with experienced diver/photographer Joe Spindler on Friday, Aug. 15 (Maynard Room). The color slide show, with background music, visits the watery graves of S.S. Washington, S.S. Balboa, S.S. Tavronlita, and R.M.S. Rhone.

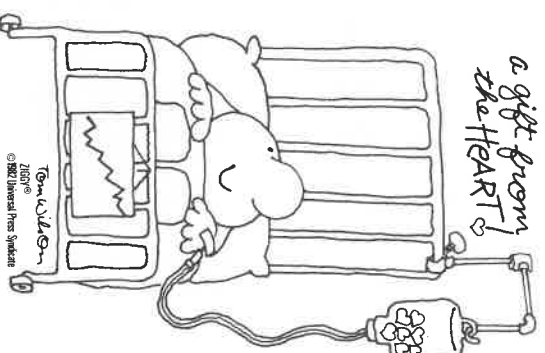
### For children:

Friday, Sept. 12, 7:30pm, **Anim Art Puppet Theater** presents Dave Herzog's Marionettes in "Zing Went the Strings." (Maynard Room)

Saturday, Sept. 13, 9am, **Registration for Preschool Storytime** begins in the Children's Room; 10-week series on Tuesdays or Wednesdays (10am or 1:30pm) run Sept. 30 - Dec. 3.

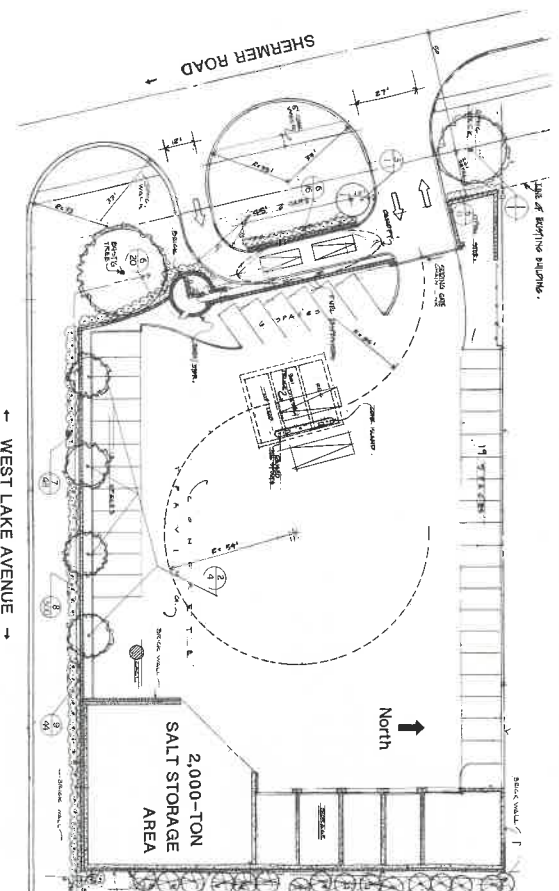
Saturday, Sept 13, 9am, **Registration for Toddler Storytime** (age 2 with parent attending) begins in the Children's Room; 2 series on Mondays, 9:45am or 10:30am, Sept. 29 - Oct. 27, or Nov. 3 - Dec. 1.

# BLOOD...



Donate at the Blood Center of Northern Illinois, 1255 Milwaukee Avenue, Glenview, 298-9660.

## Public Works Service Center, Phase II: Site and landscape plan



# Police offer free home-security checkups

John Good, Glenview Police Department Crime Prevention Officer, conducts a security survey of a Glenview residence. (Note papers in his hand; he fills out a 4-page security report while conducting the survey.)



**1 - BAD:** Shrub overhangs steps, obscuring view of front door. (Attacker could hide, ready to grab someone entering.) **Remedy:** Trim shrub so front door is clearly visible from street.



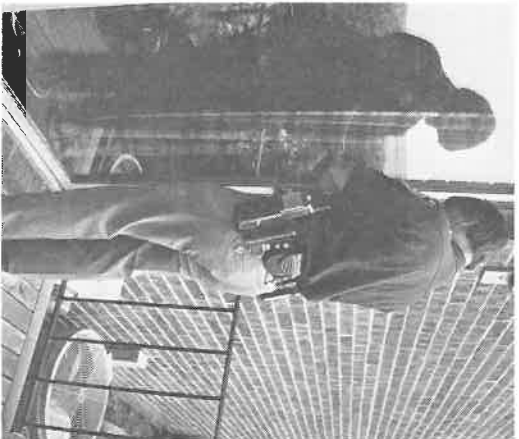
**2 - GOOD:** Once shrub is trimmed, lantern over front door will afford both safety and illumination of address. (Glenview police recommend at least 40 watts for lighting front doors and addresses.) Black Arabic numeral on white background is easily read from street. (Occupants are not at risk when police, firefighters or paramedics must find them quickly in an emergency.)



**3 - GOOD:** Front door is solid (not hollow-core) construction, with frame strong enough to prevent forcing or spreading. Note deadbolt (arrow).



**4 - GOOD:** Sliding patio doors are secured by bars with locks, preventing opening or removal from outside.



**5 - BAD:** One sliding door isn't snug, allowing up-and-down movement. **Remedy:** Install screws in the upper channel to prevent maneuvering door out of channel.



**6 - BAD:** Outside patio light fixture is broken. **Remedy:** Replace fixture and use light at night. (Glenview police stress importance of lighting in home security.)



**7 - GOOD:** Smoke alarm with 9-volt battery is mounted at top of basement stairwell. (Identical alarm unit is at top of stairwell leading to 2nd floor.) Door to basement stairs locks from house side.



**8 - GOOD:** Door from garage to basement has lock. **BUT . . . BAD:** Hinges are in garage rather than on the house side; entry could be made by removing door. **Remedy:** Remount door and put hinges on house side.



**9 - GOOD:** Casement windows are equipped with inside locks — good protection (but only when used).



**10 - GOOD:** Garage door, kept closed when not in actual use, locks automatically and securely, with no "play" when manual lifting is tried.



**11 - BAD:** Uncovered basement window well offers possible entry and trap for small animals. **Remedy:** Make a wire mesh cover, with padlock.



**12 - 4-page** Residential Security report, covering deficiencies and making recommendations, is left with householder.

**If you would like a free Home Security Inspection, call Officer John Good at the Glenview Police Department, 729-5000.** If he's not in when you call, please leave your name and number — he'll call you back to arrange a time convenient for you.

"While we can't guarantee your home can be made absolutely theft- or robbery-proof," says Officer Good, "we can advise on how to reduce chances of your ever having a break-in."

He also points out that homeowners should update their needs regularly and watch for new and perhaps better security devices as they come on the market.

# Community Bulletin Board

**"SLIM AND TRIM"** (free exercise and yoga for men and women, sponsored by the Glenview Health Department and conducted by Jane Reidy) meets Tuesdays, beginning Sept. 16, 7:30-9:30pm, at Lyon School, 1335 Waukegan Road. Please wear comfortable clothing and bring an exercise mat.

**GLENVIEW AREA SAFETY COUNCIL** meets for breakfast monthly on the 2nd Tuesday, 7:30am, at Glenbrook Hospital; public invited.

## Recent actions of the Village Board

**Awarded contracts:** For second phase of the Public Works Service Center (salt storage, fueling facility, paved yard — see story on page 1 and site plan on page 2) to Certified Midwest Construction Co., Berwyn; for 1986 sidewalk/curb/gutter program, to Globe Construction, Franklin Park, (\$59,910); for sewer photography and cleaning to Sewer Equipment Co. of America for \$11,584. . . . **Amended the municipal code:** To require all water meters to be installed through exterior walls adjacent to gas meters (page 1 item); to cancel residency restrictions for Fire Department personnel (other village personnel have never been restricted as to residence). . . . **Annexed 8.25 acres** of Park District property at 3602 Glenview Road. . . . **Amended a** planned-development ordinance to allow one tenant-identification sign at 3633 West Lake Avenue. . . . **Approved conditional uses (B-3 in B-2 zones):** Cleaning establishment, 1938 Waukegan Road, subject to certain conditions; ice-cream parlor at 1240 Waukegan Road. . . . **Approved renaming** Vantage Lane addresses: In Unit 1, lots 7-14 become Vantage Point, lots 15-20 Vantage Drive; in Unit 2, lots 37-42 become Vantage Terrace, lots 43-48 Vantage Circle; in Unit 3, lots 49-54 Vantage Court. . . . **Declared surplus** certain village-owned equipment, and approved sale by auction. . . . **Passed annual resolutions** re: Joint-purchasing agreements with NWMCC; recognition of prevailing wage scales for employees of contractors hired to do village work.

**As space permits, we will announce nonprofit, nonsectarian, nonpartisan events of community-wide interest between the 15th of one month and the 15th of the next. Items for August 15 through September 15 should reach the Village Hall or its editor by 10am Wednesday, Aug. 20.**

**JOBS FOR SENIORS,** a free employment service (for both employers and employees), places people over 50 in jobs up to middle-management level (no babysitting). Call 446-8750.

**FREE BLOOD-PRESSURE TESTS** by Glenview paramedics are available at the fire station, 1815 Glenview Road, 9am-5pm, 7 days a week, without appointments. Those unable to come before 5pm may call the station, 724-2141, for evening appointments.

**PAGE BUS 10-RIDE** tickets are good for any Pace bus ride up to \$1, and on certain express routes by depositing the additional fare. Tickets are \$10 (\$5 for seniors, students, and the disabled). Beginning August 26, Pace Route 421 (Willbus) will be extended from Wilmette to downtown Glenview, enabling Glenview riders to get to the Linden Avenue CTA station. For more information call 364-PACE.

**CONGRATULATIONS** to Robert Herzog, who recently won the Chicago Region Bral Brith Otto F. Weiner Community Service Award for volunteer work with seniors at Mary Haven and Parkside Human Services.

**FACTS AND FALLACIES** regarding breastfeeding will be discussed by the Glenview La Leche League August 19, 7-8:30pm, at a residence at 2615 Woodlawn Road, Northbrook. Pregnant women and mothers of babies welcome. For more information call 967-8259 or 564-4722.

**GARBAGE PICKUPS** for Weidner Disposal customers will be as follows for the week of September 1: Monday customers will be serviced on Tuesday, Sept. 2; Tuesday customers on Wednesday, Sept. 3; Wednesday customers on Thursday, Sept. 4; Thursday and Friday customers on Friday, Sept. 5. Saturday customers will have service as usual.




**TAXES PAID BY GLENVIEW BUSINESSES** account for almost one-third of every revenue dollar needed to support village services.

**MUSICAL ITEMS** (records, tapes, instruments, sheet music, stereo equipment, etc.) may be left at the Fire Station, 1815 Glenview Road (parking and rear entrances on Dewes Street) until September 1. Donated items will be sold September 24-29 at the Mammoth Music Mart, Old Orchard, to benefit the Les Turner ALS Foundation for Amyotrophic Lateral Sclerosis (Lou Gehrig's disease). Donations are tax-deductible (tax receipt forms will be mailed upon request). If you want items picked up call 679-3311. (Pickups are free.)

**NEW STAMP-VENDING MACHINES** at 1919 Prairie Street and 1809 Waukegan Road are available Mon.-Sat. (6am-11pm at the Waukegan Road address). Sunday vending hours are 11am-5pm at the at the Prairie Street address. The machines dispense booklets (\$2.20 and \$4.40) and single denominations (14, 17, and 22¢). Bill changers for \$1's and \$5's are available. Window service on Prairie Street: 8:30am-6:30pm Mon.-Fri., 8:30am-12:30pm Saturday.

**CHARLES K. ESLER, Jr.**, was recently appointed to the Glenview Village Board of Trustees to complete the unexpired term of Robert O. Pohl (resigned). A resident of Inquois Drive in Indian Ridge subdivision (west Glenview), Esler is senior vice president and regional manager of LaSalle Partners, a Chicago firm dealing in corporate real-estate management. A graduate of the University of Michigan (B.S., mechanical engineering) and Northwestern University (M.B.A., finance), he served 2 years in Japan with the Military Police, 11 years with IBM's data-processing division, and has been associated with LaSalle Partners for 7 years.

**GCDA** (Glenview Citizens for Drug/Alcohol Awareness) meet monthly on the first Wednesday, 2320 Glenview Road, 7:30pm; public invited.

SUN	MON	TUES	WED	THUR	FRIDAY	SAT
<b>AUGUST 17</b>	<b>18</b>	<b>19</b>	<b>20</b>	<b>21</b>	<b>22</b>	<b>23</b>
<b>STATE FAIR</b>	<b>CABLE COMMISSION</b> 7:30pm, Vg. Hall	<b>VILLAGE BOARD</b> 8pm, Vg. Hall	<b>LIBRARY BOARD</b> 7:30pm, Glenview Public Library			
<b>24</b>	<b>25</b>	<b>26</b>	<b>27</b>	<b>28</b>	<b>29</b>	<b>30</b>
<b>SUMMER FUN</b>	<b>ZONING BOARD OF APPEALS</b> , 8pm, Village Hall	<b>PLAN COMMISSION</b> 8pm, Vg. Hall	<b>APPEARANCE COMMISSION</b> , 8pm, Village Hall			<b>Practice!</b>
<b>31</b>	<b>1</b>	<b>2</b>	<b>3</b>	<b>4</b>	<b>5</b>	<b>6</b>
	<b>VILLAGE HALL CLOSED</b>	<b>DIST. 225 OPENS</b> Village Board 8pm, Vg. Hall	<b>BOARDED FOR</b> DIST. 24 OPENS FOR HALL DAY, KINDERGARTEN	<b>DIST. 34 OPEN</b> ALL DAY, KINDERGARTEN TOO!		
<b>SEPT. 7 GRANDPARENTS' DAY</b> <b>MOSES BIRTHDAY</b>	<b>7</b>	<b>8</b>	<b>9</b>	<b>10</b>	<b>11</b>	<b>12</b>
<b>14</b>	<b>15</b>	<b>16</b>	<b>17</b>	<b>18</b>	<b>19</b>	<b>20</b>
<b>GRANDPARENTS' DAY</b>	<b>ZONING BOARD OF APPEALS</b> , 8pm, Village Hall	<b>PLAN COMMISSION</b> 8pm, Vg. Hall	<b>SR. CITIZEN COMMISSION</b> , 9am, Vg. Hall	<b>PARK BOARD</b> , 7:30pm, Park Dist. Office	<b>JESSE OWENS BIRTHDAY</b> SEPT. 12.	
	<b>15</b>	<b>16</b>	<b>17</b>	<b>18</b>	<b>19</b>	<b>20</b>
	<b>GRABE COMMISSION</b> 7:30pm, Vg. Hall	<b>"SLIM/TRIM" OPENS</b> -7:30am, Lyon School	<b>LIBRARY BOARD</b> Public Library			