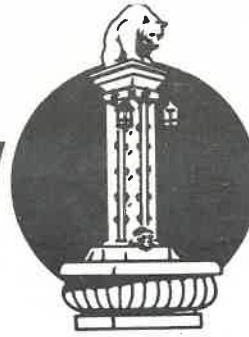


VILLAGE OF Glenview



monthly newsletter

Number 102
MAY 1977

VILLAGE ELECTS NEW OFFICIALS

On April 19 Glenview elected the following Village officials to four-year terms:

VILLAGE PRESIDENT: Thomas E. Smith

VILLAGE TRUSTEES: Patricia F. Clemens
Scott J. Helton
Richard L. Hibbard

VILLAGE CLERK: Carol C. Heffernan

Voters also elected two Library Directors to six-year terms:

LIBRARY DIRECTORS: Alice Elizabeth Nightingale
Virginia Seeberg

The official canvass was approved April 21.

OUR SPRING BLOOD DRAW-
ing will be held on
Tuesday, May 10, 3 to 8
PM, at the Fire Station, 1815
Glenview Road. Blood donations
are much needed and appreciated.
If you're between 17 and 65,
weigh at least 110, and are in
general good health, you are
probably eligible to donate.
Please call 724-1700 to make an
appointment.

**MARK YOUR
CALENDAR!**



WITH THE COLDEST WINTER on record now behind us, the Water Department reports a total of 85 water leaks (each seemingly on the most miserable day or night in the history of the world). Of the total, 47 were on parkways, making it necessary to dig up some parkway lawns. The scars are now being filled with black dirt and seeded. If you are one of the homeowners affected, please keep the restored section watered, in order to return it to its original condition.

NORTRAN BUSES SHOW HUGE GAIN

The NORTRAN (North Suburban Transportation) Bus System reports a real success story, some of its routes showing a gain in ridership of more than 400% over last year.

The four routes servicing Glenview are also high gainers. Route 210 (from the Naval Air Station to the Chicago Loop via Glenview and Waukegan Roads) shows an increased ridership of 10%.

Route 211 (from Glenview to the Chicago Loop via Central Street and Harlem Avenue) shows an increase of 24%. Route 212 (to Davis Street in Evanston via Waukegan and Glenview Roads) is up 10%. Route 220 (to O'Hare Airport from downtown Glenview via Harlem Avenue and Central Street) is up a whopping 39%. Figures are from March of 1976 through March of 1977.

Don't forget that Route 212 goes to Northbrook Court approximately every hour, including Saturdays (but not on Sundays or holidays), stopping upon demand. For complete information about all NORTRAN service please call this toll-free number: 800-972-7000.

THE VILLAGE NOW HAS OPENINGS FOR:

ELECTRICAL INSPECTOR, responsible for reviewing plans, performing field inspections, issuing permits and enforcing codes. Position involves contact with both residents and contractors. High-school certificate (or its equivalent) is required, and experience as a journeyman electrician is desirable. Salary starts at \$1,096 per month, with regular annual increases. Excellent fringe benefits include paid vacations and holidays, sick leave, clothing allowance, comprehensive health insurance and pension fund. Please apply before May 20.

KEYPUNCH OPERATOR with basic bookkeeping knowledge, statistical aptitude and good typing. Experience in IBM 3/10 computer-card system is desirable. Salary starts at \$707 per month with regular annual increases. Fringe-benefit package is the same as stated above.

PART-TIME STUDENT CLERK-TYPIST to work 2 hours a day during the school year and full time during the summer. Duties include general office typing, filing and phone work. Salary is \$2.75 per hour.

Apply to Personnel Director, 1930 Prairie Street, Glenview IL 60025. Glenview is an Equal-Opportunity Employer.

VILLAGE PRESIDENT: Thomas E. Smith CLERK: Carol C. Heffernan
TRUSTEES: Patricia F. Clemens, John D. Crawford, Scott J. Helton,
Richard L. Hibbard, Charles R. Loebbaka, James W. Smirles
MANAGER: Robert H. van Deusen Newsletter Editor: Mimi Chan
Village Hall Telephone Number: 724-1700

Since your last Newsletter
THE GLENVIEW TRUSTEES ...

- Approved the sale (for \$900) of a one-foot strip of property adjacent to the east wall of the Fire Station.
- Approved purchase of property (\$58,000) at 1225 Waukegan Road, for public use.
- Contracted with the firm of Novak, Dempsey and Associates (\$14,000 of local Motor Fuel Tax funds) for the first phase of a pavement evaluation engineering study.
- Approved an agreement with Consoer Townsend & Associates for a preliminary design of a paving improvement for all of Harlem Avenue and for Central Road west of Harlem.
- Authorized installation of stop signs on Heatherfield at Ferndale and Sherwood, and on Sherwood at Beech.
- Accepted the bid of Clarke Outdoor Spraying (\$2,880) of Roselle for Dutch Elm Disease control (spraying of parkway trees with Methoxychlor).
- Approved 6 lots for single-family use on the north side of Glenview Road west of Echo Lane (property previously in non-conforming commercial use).
- Approved resubdivision of 1913 Waukegan Road for a restaurant.
- Annexed 10 vacant acres at 2100 Pflingsten Road, west of Glenbrook Hospital, rezoning it H-1, for hospital use.
- Annexed property at 2320 Pflingsten, rezoning it for 32 single-family homes to be developed as Westwood II Subdivision.
- Annexed property at 1804 Chestnut and 1763 Jefferson, rezoning it for 23 townhouse units.
- Annexed property at 1722-28 Chestnut.
- Annexed property at 1830-31 Balmoral.
- Regulated parking in front of and east of Woodrow Wilson School (Harrison Street at Sheryl Lane).
- Vacated an unused public walk easement between Hunter Road and Laramie Avenue, at the request of the property owners involved.
- Amended the Comprehensive Plan, changing 2½ acres at the southwest corner of Milwaukee Avenue and Dearlove Road from multiple-family to business use.
- Prohibited discharge of sanitary and industrial water at the proposed East Lake Avenue underpass, and regulating encroachment upon the public right-of-way.
- Objected to proposed (County) rezoning of 15 unincorporated acres at the northeast corner of Dearlove and Central Roads, for multi-family use.

HOW TO SURVIVE A FIRE . . .

— Advice from the Glenview Fire Prevention Bureau

Most fatal fires occur between 10 PM and 6 AM, when most people are sleeping. If you have a smoke detector that is working properly, you'll be awakened by the alarm. So far, so good — BUT ...

DON'T get out of bed in your usual way and stand up! You may put your head into a cloud of superheated air. Instead, roll out of bed and CRAWL to the bedroom door (which should always be CLOSED when you are asleep.



TEST the door with your hands, rising very slowly to test the temperature of the air. If the surface of the door is hot, DO NOT OPEN IT — escape through a window instead. If the door is not hot, crack it open cautiously, bracing your shoulder firmly against it — there may be gases under pressure on the other side. If the air coming through is warm, close the door and escape through a window. If the air is not warm, you're probably safe escaping through the door.

GASES can kill you after just a few breaths. When crawling, keep your head at least two feet off the floor. Heavier-than-air poison gases are at floor level, and superheated air is above your head. (But keep holding your breath as much as you can.)

DON'T STOP TO USE THE PHONE. Get outside and phone from a neighbor's house. DON'T STOP FOR CLOTHING OR BELONGINGS OF ANY KIND. A few seconds delay could kill you, but going outdoors in your nightclothes will not hurt you.

NEVER RE-ENTER A BURNING BUILDING under any circumstances.

IF YOU'RE TRAPPED, keep closed doors between you and the fire. Seal off cracks with cloth or rugs (soaked, if there is any water in the room). Open a window top and bottom and signal so that people will know you are there. If there's a phone in the room, call the Fire Department, even if they're already at the scene. They'll get the message.

DON'T PANIC and DON'T JUMP! Try to be calm, and do cooperate with the Fire Department. (It has been through all this before, remember.)

THE WILMETTE VILLAGE BOARD HAS DENIED a petition to rezone 3640 Lake Avenue (in Wilmette), to accommodate 264 multi-family units under a special use. (Glenview had previously opposed the proposed rezoning.)

THE METROPOLITAN SANITARY DISTRICT held a ground-breaking ceremony on the retention-basin property in Techny on April 20, with former Glenview Mayor Edward K. Patten and Village President Thomas E. Smith participating.

1,300 Glenview households are onto
A VERY GOOD THING: THEFT-GUARD

A total of 1,300 Glenview homes have been Theft-Guarded since our Police Department introduced the Theft-Guard system of property identification in 1972.

The remarkable thing is that, while burglaries in Glenview have increased steadily (15% during the past 12-month period alone), *only 3 Theft-Guarded Glenview homes have EVER been burglarized!* Two of the three recovered the stolen goods.

Theft-Guard is a simple system of engraving your driver's-license number on all your valuables (TV and stereo sets, sporting goods, bicycles, etc.) with an easy-to-use electric engraver that you may borrow, free of charge, from the Police Department. Simply go to the reception desk at 1215 Waukegan Road, or call 729-5000.

It takes only a few minutes and is well worth the time involved. Police will give you stickers to put on doors and windows to show potential burglars that your valuables cannot be "fenced" (which will undoubtedly keep your home from being entered at all).

If you are afraid you cannot operate the electric engraver, police officers will be happy to come to your home and do the job for you. Please call today - tomorrow may be the day *after* your burglary - too late to do you much good!

WASTE DISPOSAL IN GLENVIEW

You are reminded that it is against the Municipal Code to accumulate waste materials unless they are enclosed in approved containers of 10- to 32-gallon size, made of non-absorbent, durable, non-corrodible metal or plastic, equipped with handles and tight-fitting lids so as not to attract insects or rodents. It's a good idea to keep your containers on an impermeable surface or on a rack that lifts them at least a foot off the ground.

Containers should be marked with your house number and be kept in a place easily accessible to the waste collector. Garbage should be drained and wrapped or bagged before being put into containers. Household waste (garbage, cans, papers, etc.) will be collected at the storage site.

Your waste-disposal collector will also accept yard refuse (grass clippings, leaves, and branches no more than 4 feet long, but no dirt or sod), provided it is contained in bags or disposable containers of no more than 32-gallon capacity, or tied into bundles no larger than two by four feet and weighing no more than 60 pounds. Place yard refuse on the parkway or curbside no earlier than 7 PM the night before collection.

Stoves, refrigerators, large pieces of furniture, massive brush, and all other bulky materials will also be picked up on regular collection days if placed at the curb no earlier than 7 PM the night before collection day.

(Continued on the last page)

NEWLY-PLANTED PARKWAY trees require your special attention right now, if you had one planted last fall under our 50-50 tree program:



- The mulch at the base of the trunk should be mixed into the soil.
- Water the tree very generously.

- Keep the area at the base of the trunk cultivated regularly with a fork or hoe, to allow water and air to enter.

- Leave the trunk wrapping on the tree until it falls off by itself (which will be in about two years). The wrapping prevents sun scald and protects against lawn-mower damage during the summer months.

DO NOT FERTILIZE this year - enough fertilizer was put into the burlap ball before the tree was planted to nourish the tree this year. Additional fertilizing will burn and kill new young roots coming through the burlap wrapping.

If you have questions, please call Public Works at 724-1700.

KEEP AN EYE ON ELMS growing on private property this spring, watching for wilting, browning of leaves, or premature defoliation - all signs of Dutch Elm Disease. If you see a tree that looks as though it may have the disease, please call the Public Works Department immediately (724-1700). Public Works personnel will take a sample, have it tested, and let you know for sure whether the disease is present.

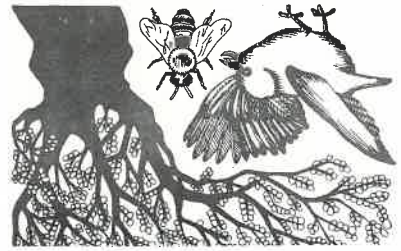


If it is, the owner is responsible for treating the tree or having it removed. Arborists say there is no known single cure for DED, though Methoxychlor, Lignasan, and trimming of dead branches seem to arrest the spread of the disease. Consult a reputable tree service before deciding what to do.

The Village has recently completed spraying about 800 parkway elms with Methoxychlor, in the hopes of prolonging their lives.

THE ORANGE MARKINGS you may have noticed on some of our pavements mean only that the surface so marked is involved in a series of tests being made by the Public Works Department. About 20 miles of pavement surfaces of all types are being evaluated, as part of the Village's 10-year maintenance program.

Postal Customer



(Printed on recycled paper)

Glenview, Illinois 60025
1930 Prairie Street



All other kinds of waste (construction debris, dirt, sod, rock, metal, chemicals, etc.) require special collection. Please call your disposal company to make arrangements.*

Two kinds of collection service are available — once-a-week service with a 2-can limit, or twice-a-week service with no limit on the number of cans.

Hours of collection are between 6 AM and 6 PM. Holiday collection schedules are arranged so that you never miss more than 2 collection days per calendar year. Quarterly bills are sent to you directly by your disposal company.

If you have questions or complaints, please call your waste-disposal company.* Each firm is required to maintain an answering service Mondays through Fridays between 9 AM and 5 PM. If you get no satisfactory response, you should then call the Village Sanitarian at 724-1700, Extension 61.

*Waste-disposal companies serving single-family residences in Glenview are:

- BEST SCAVENGER 724-2966
- VAN DER MOLEN DISPOSAL
(GLENVIEW DISPOSAL) 724-6564
- WEIDNER DISPOSAL 729-5523
- RITeway DISPOSAL 729-5247
- GLENBROOK DISPOSAL 724-8409



YOU ARE ALSO reminded that, except for non-commercial cooking of food, NO OPEN BURNING is allowed anywhere within Village limits. (And at today's prices, please don't burn the steaks!)

IF YOU ARE INTERESTED IN JOINING AN ADULT book discussion group, please mark your calendar for June 13 and July 11, and plan to be at the Library on those dates. We'll remind you in the June Newsletter. (Or you may call the Library at 724-5200 for further details now.)



ABOUT WATER AND LAWN CARE ...

WATER, as we all know, is a precious fluid, not to be wasted or used capriciously — if for no other reason that its cost.

To maximize lawn beauty this summer, while reducing water use, set your mower on a flat surface and adjust the cutting height from 2½ to 2¾ inches.

If you cut lower than 2½ inches, you remove the entire blade of grass, exposing the stem and roots to the sun — not conducive to maximum health and growth.

Use a mulching mower if possible. Mulch provides food and protection for the roots. Cut so that the mulched discharge goes onto the uncut grass. That way you mulch twice and the mulch is finer cut.

MOST IMPORTANT OF ALL:

Water with a good soaking only once a week, using a sprinkler with a coarse spray, to lessen evaporation. Use a rain gauge and water to about one inch.

If you follow this advice you will have a pretty, healthy lawn without excessive use of water.